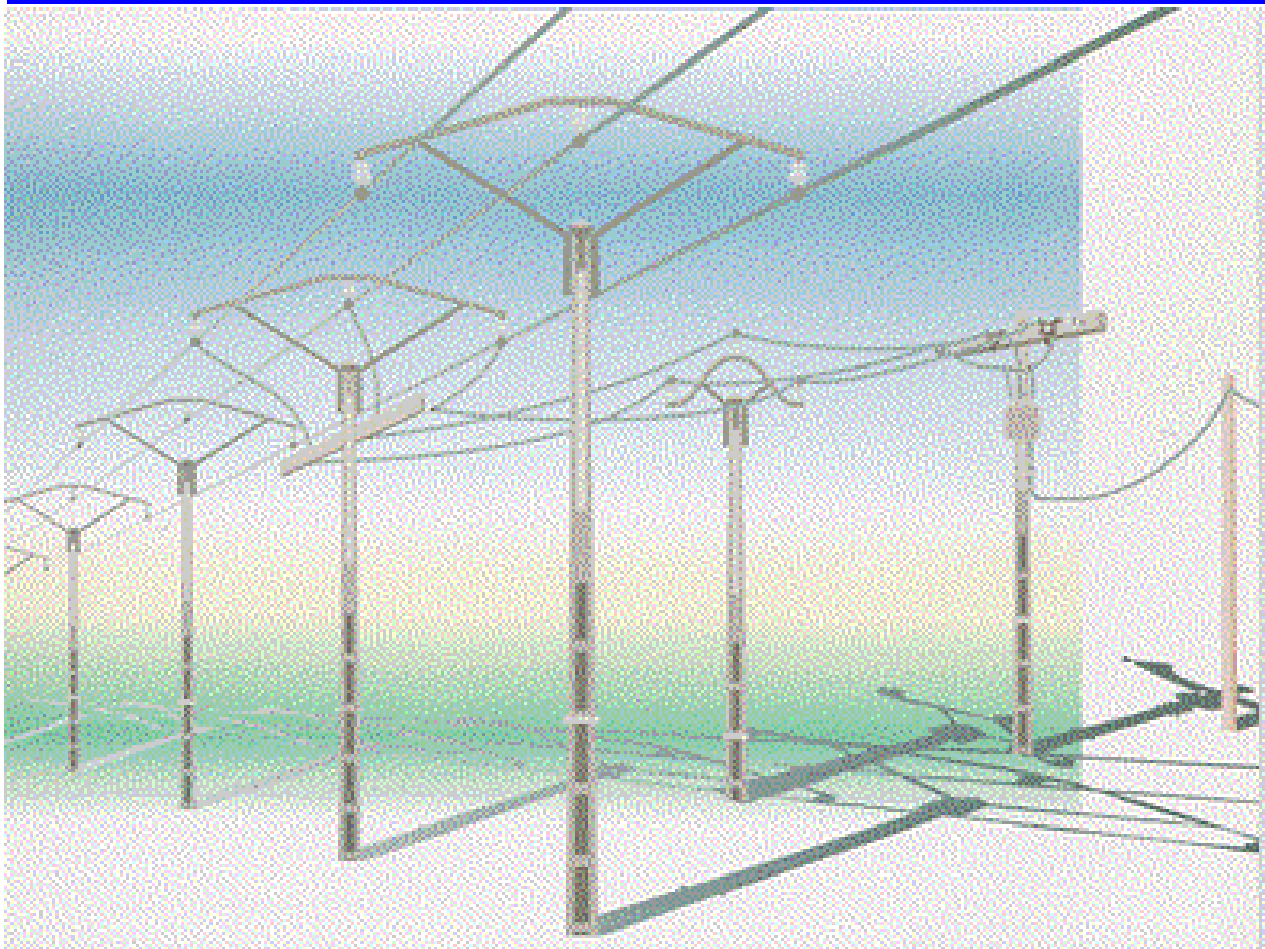




International Distribution



**COMPUTER-AIDED DESIGN OF
MV AND LV ELECTRICAL LINES**



OBJECTIVES

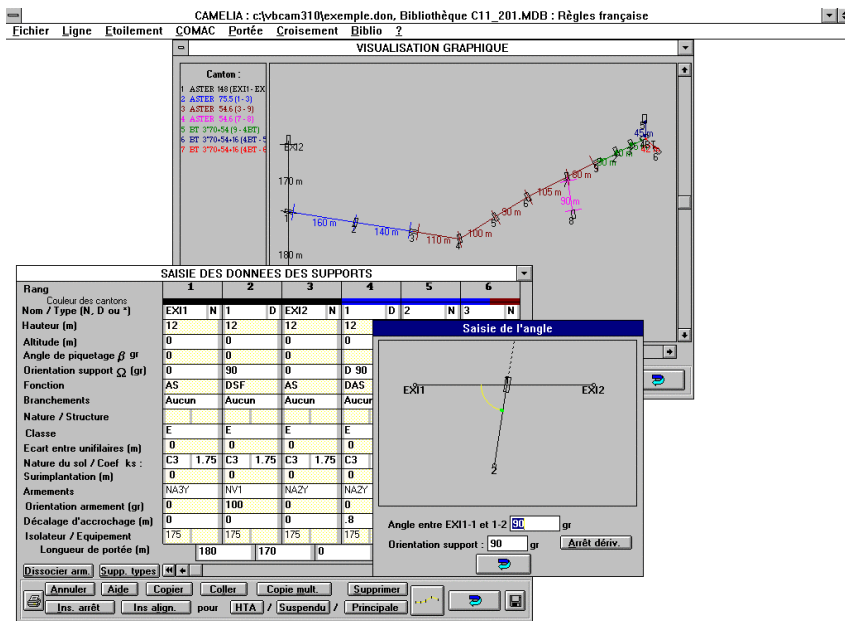
- Reliability of networks.
- Choice of material in a complete database.
- Allowing modifications of calculations rules.
- Adaptation to the complexity of various load cases.



MicroStation 95™ based
MicroStation 95 is a Bentley product

FUNCTIONS

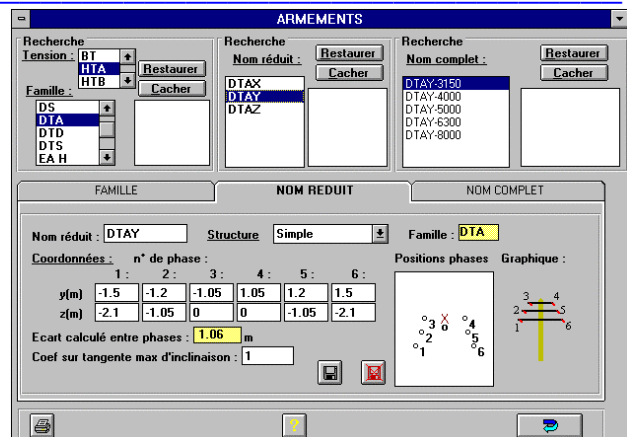
- Distance between phases.
- Insulators swings, high wind and cold load cases.
- Check the mechanical tension of cables and insulators.
- Dimensioning arms and poles.
- Check the line in true span calculation and disymmetric ice.
- Automatic calculation of branches and special poles.
- Stringing charts.
- Study of a section in any load conditions.
- Line crossing.
- Study of a particular span, looking for initial conditions for an existing line.
- Windows® full ergonomy.
- Quick data editing.
- Design a complete line : main line, secondaries lines and branches.
- Graphical display of the design.
- Chech vertical clearances and optimization of poles height.
- Help can be modified by the user.
- Display suggested initial conditions depending of cable and load cases.
- Material summary on Word® or notepad.



Data editing
and
design displaying

CALCULATION RULES EDITABLE

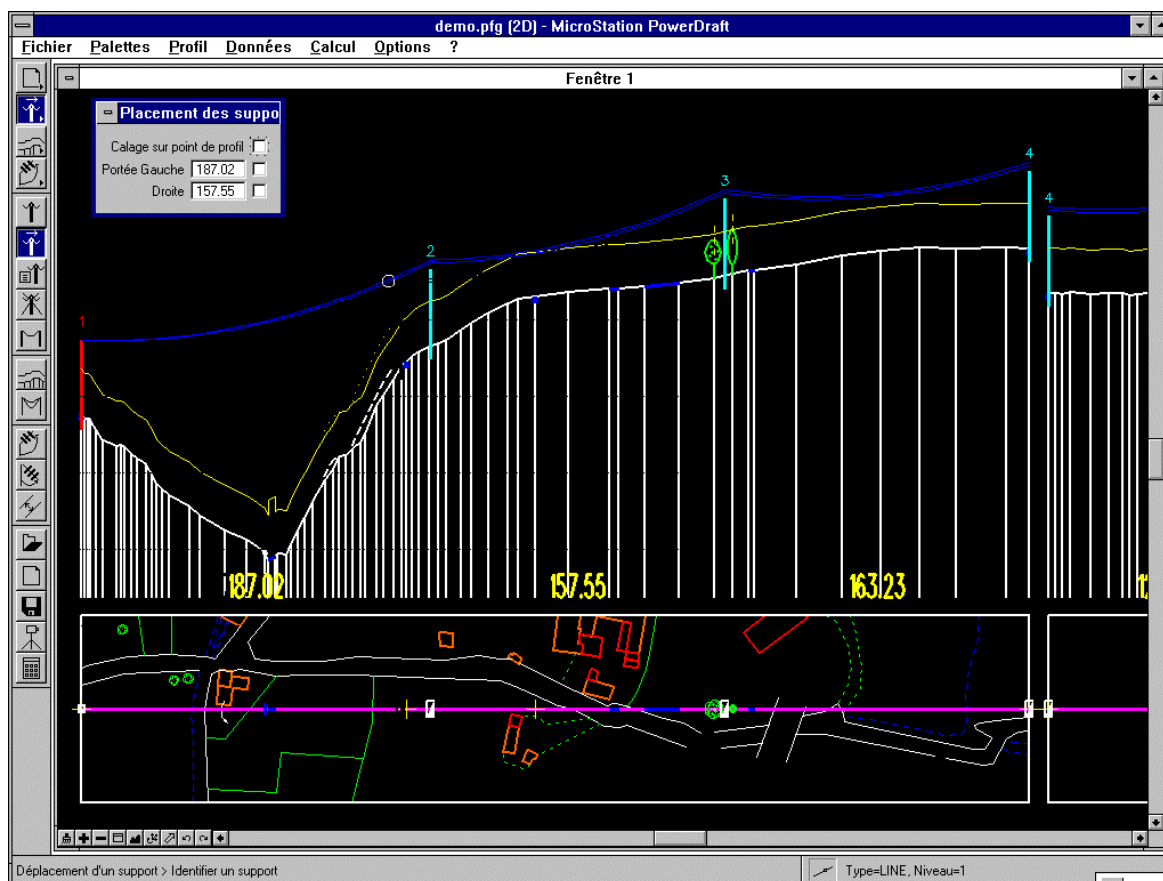
- Creation of new databases, with international rules.
- Graphical help when creating an arm or a pole.
- Choice of many strength diagrams, including wood poles assembling.
- Rules for minimal distance between phases and foundation depth.
- Any load cases.
- Certificated by french organism U.T.E.
- Database of all french materials and rules.



GRAPHIC MODULE WITH GROUND PROFILE : INTERACTIVE SPOTTING AND STRINGING

FUNCTIONS ON THE GROUND PROFILE

- MicroStation® ergonomy : zoom, icon box, fast scrolling, ...
- Read various types of surveying files.
- Add a plan view digitized
- Automatic generation of ground profile.
- Modification of ground profile and edition of obstacles
- Automatic check of vertical clearance above ground and top of obstacle.
- Check distance between phases and insulator swings
- Place and move poles with the mouse cursor, in the ground profile or in the plan view.
- Zoom and scrolling keep active the current function.
- Modification of obstacles, colors and clearances height.
- Display all phases.
- Display catenaries after CED tripping.
- Personnalization and preview of final plan.
- All kind of plotters supported.



Computer configuration :

- PC Pentium
- 16 Mo RAM
- 20 Mo available on HDD
- SVGA screen
- MicroStation® 95 or MicroStation PowerDraft® 95
- Windows® 3.1 ou Windows® 95
- CD-ROM



